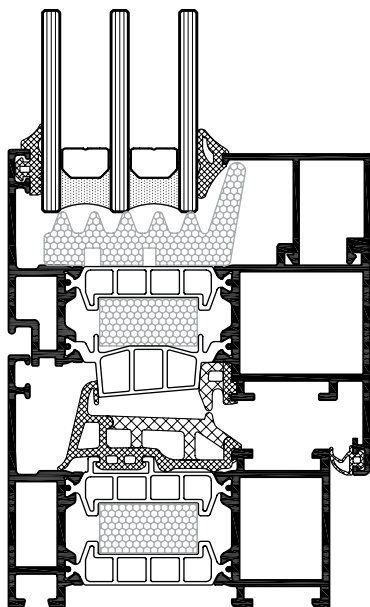


OPENING WINDOW AND
DOOR SYSTEM WITH
THERMAL BREAK

ETEM

E75 IS A SYSTEM
CORRESPONDING TO
THE MOST MODERN
REQUIREMENTS OF THERMAL
INSULATION, FUNCTIONALITY
AND AESTHETICS



FEATURES

- Uw= 1,14 W/m²K
- Additional insulator under the glass
- Additional insulator in the thermal break chamber

- Co-extruded additional gasket
- Co-extruded central gasket
- Better drainage and air permeability
- 39 mm polyamides width

E75

OPENING WINDOW AND
DOOR SYSTEM WITH
THERMAL BREAK

DESIGN

CO-EXTRUDED CENTRAL GASKET
FOR BETTER THERMAL INSULATION,
DRAINAGE AND AIR PERMEABILITY

SECURITY

POSSIBILITY OF MOUNTING ANTI-
BURGLAR HARDWARE FOR BETTER
SECURITY PERFORMANCE

EFFICIENCY

EXTRUDED CORNERS FOR CRIMPING
MACHINE ALLOWING BETTER
CONNECTIONS AND REDUCED
ASSEMBLY TIME

DETAILS

Excellent thermal insulation

Elegant straight design - 75 mm system width

39 mm polyamides width

Additional insulator in the thermal break chamber

Co-extruded central gasket

Additional insulator under the glass

